

House Screen Specification

Category A

Screen / Panel - Zenith Woven	3
Screen / Panel - Camira Artisan	4
Screen / Panel - Camira Bond	5
Screen / Panel - Kvadrat Relate Screen	6
Screen / Panel - Camira UK Cara	7
Screen / Panel - Camira UK Carlow	9

Category B

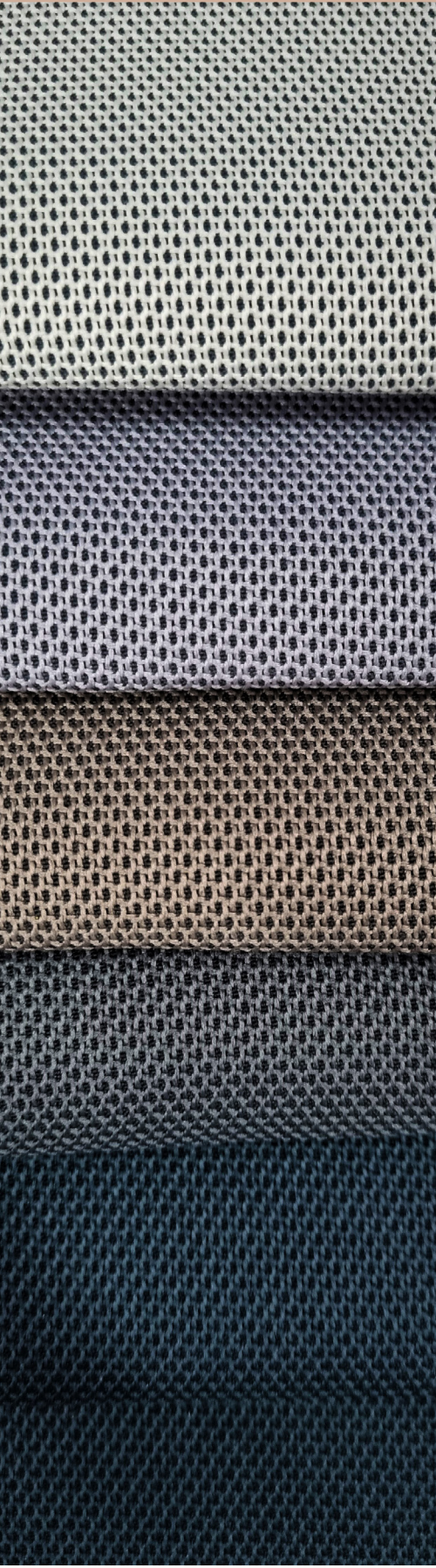
Screen / Panel - Kvadrat Remix Screen	11
Screen / Panel - Camira UK ERA 170	12
Panel only - Camira UK Sonus	13

PRODUCT	CAT A				CAT B				
	Screen/Panel Zenith Woven	Screen/Panel Camira Artisan	Screen/Panel Camira Bond	Screen/Panel Kvadrat Relate Screen	Screen/Panel Camira Cara	Screen/Panel Camira Carlow	Screen/Panel Kvadrat Remix Screen	Screen/Panel Camira ERA	Panel Only Camira Sonus
ZENITH									
Alpha Space	•	•	•	•	•	•	•	•	-
Precinct Screens	•	•	•	•	•	•	•	•	-
Slide on Divider	•	•	•	•	•	•	•	•	-
Framed Screens S30/S50	•	•	•	•	•	•	•	•	-
Cloud Screen	-	-	-	-	-	-	-	-	-
Verse	•	•	•	•	•	•	•	•	•

• Available – Not available

Screen / Panel

Category A



Zenith Woven

Composition: 100% polyester

Width: 170cm

Weight: 560g

Use: Screen

Abrasion: 60,000 Martindale Rubs

Light Fastness: ISO 105 B02 Grade 5-6

Fire Test: BS5852 Section 4/part 1

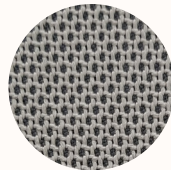
TB117 Section 1

ASI530 Part 3

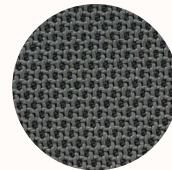
Fabric Care: Do not wash, do not bleach, do not tumble dry, iron at medium temperature (max 130°C), professional dry cleaning.



01 Cloud



02 Storm



03 Coal



04 Ink



05 Clay

Screen / Panel

Category A



Camira Artisan

Heavy duty commercial screen fabric. Linen look textural fabric with 10 great useable neutrals and sharp brights.

Application: Commercial Screen Fabric (no upholstery)

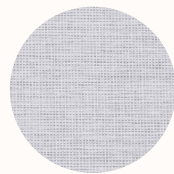
Composition: 100% Polyester

Width: 170cm

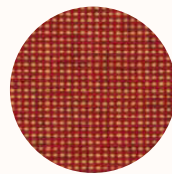
Abrasion Resistance: 65,000+ Martindale

Flammability: AS1530.3, ISO5660

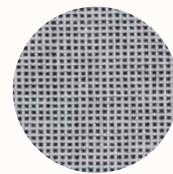
Cleaning: Do not remove any part for separate cleaning. Protect from direct sunlight. Vacuum regularly using low suction. Rotate reversible cushions regularly. Professional cleaning recommended.



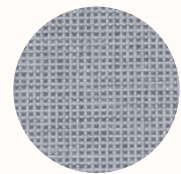
Envisage



Compose



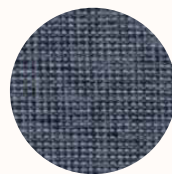
Perceive



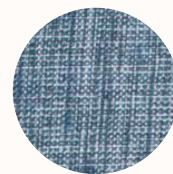
Invent



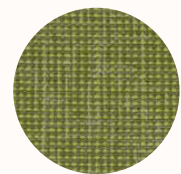
Embark



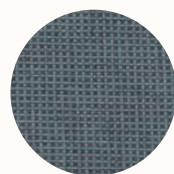
Generate



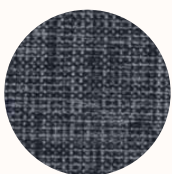
Discover



Create



Imagine



Construct

Screen / Panel

Category A



Camira Bond

Heavy duty commercial upholstery and screen fabric. Linen look textural fabric with 12 great useable neutrals and sharp brights. Bond is ideal as a Screen or Upholstery fabric.

Application: Upholstery / Screen

Composition: 100% Polyester

Width: 170cm

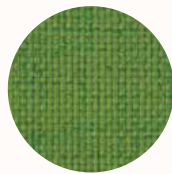
Weight: 211g/m²

Abrasion Resistance: 70,000+ Martindale

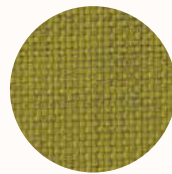
Flammability: AS1530 Part 3

Qualities: Soil Repellency treatment

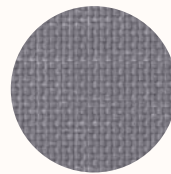
Cleaning: Do not remove any part for separate cleaning. Protect from direct sunlight. Vacuum regularly using low suction. Rotate reversible cushions regularly. Professional cleaning recommended.



Leaf



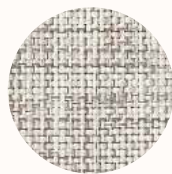
Lemoncello



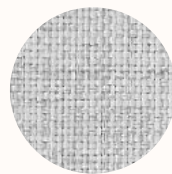
Shark



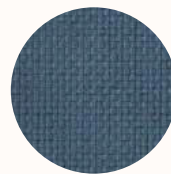
Snow



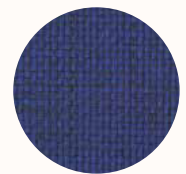
Linen



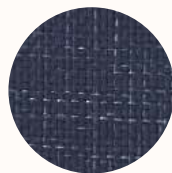
Smoke



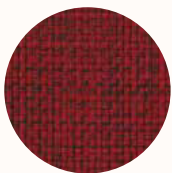
Spring



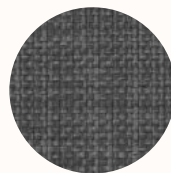
Royal



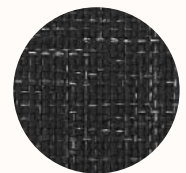
Navy



Garnet



Grey Haze



Jet

Screen / Panel

Category A



Kvadrat Relate Screen

Relate Screen is a special version of the sophisticated twill-woven upholstery textile Relate developed for wall panels, desk screens and similar applications. Patricia Urquiola has created both designs to rethink the concept of melange. While Relate Screen is identical in composition to Relate, it has a more open structure. A faux-uni, it initially appears monochromatic yet, under closer inspection, reveals a diagonal weave which fluidly blends two different coloured yarns. Relate Screen's twill-woven construction captures a delicate sense of movement and subtly references the fashion world. The textile also features a soft hand and an expression that resembles natural fibres.

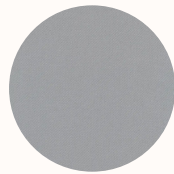
Composition: 100% Trevira CS

Width: Approx 170cm

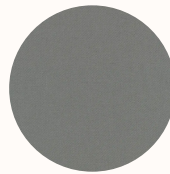
Weight: 470 g/lin.

Pilling: 3-4 (ISO 1-5)

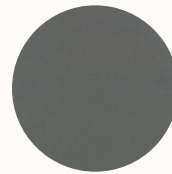
Light Fastness: 5-7 (ISO 1-8)



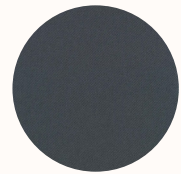
0128



0158



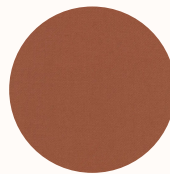
0168



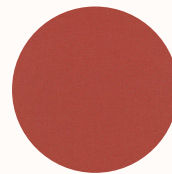
0178



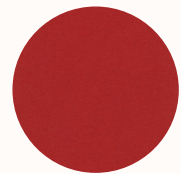
0388



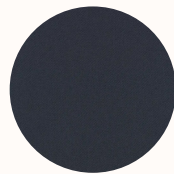
0468



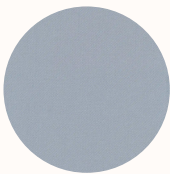
0568



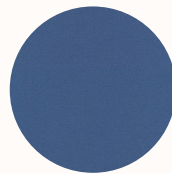
0648



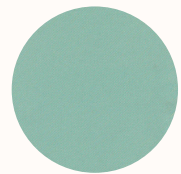
0698



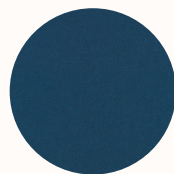
0718



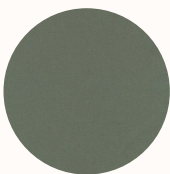
0778



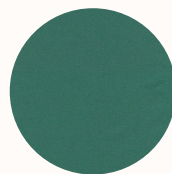
0828



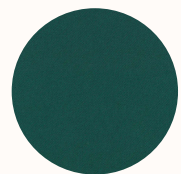
0888



0948



0968



0988

Screen / Panel

Category A

Camira Cara

Cara is a plain weave panel fabric available in a wide selection of commercial colourways. One of our most popular vertical surface fabrics, Cara is used extensively on desk screens, wallsides and on pin boards.

This fabric is largely acoustically transparent and as such is ideal to be used as a decorative facing for sound absorbing boards.

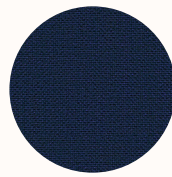
Composition: 100% polypropylene

Width: Approx 170cm

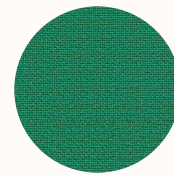
Weight: 220 g/m²



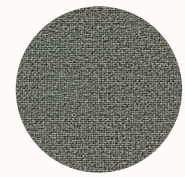
EJ004
Glass



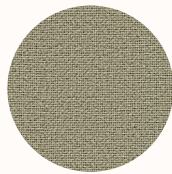
EJ011
Walten



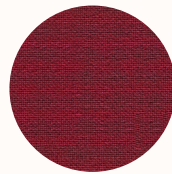
EJ015
Carron



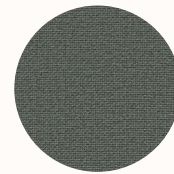
EJ016



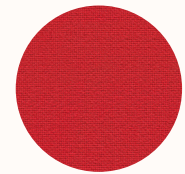
EJ033
Spray



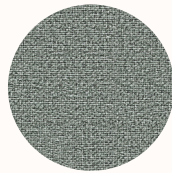
EJ038
Tummel



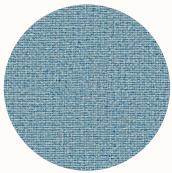
EJ048
Merrick



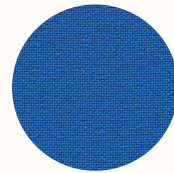
EJ076
Pitlochry



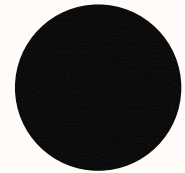
EJ104
Lead



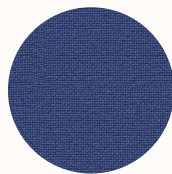
EJ105
Dolphin



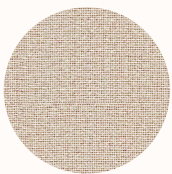
EJ125
Galilee



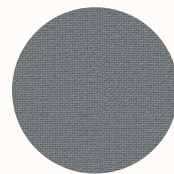
EJ138
Black



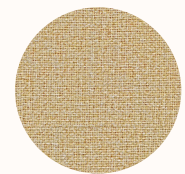
EJ154
Adriatic



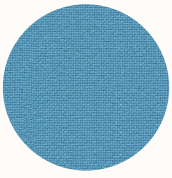
EJ169
Clan



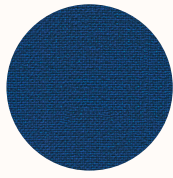
EJ172
Chaucer



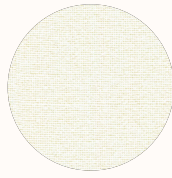
EJ173
Austen



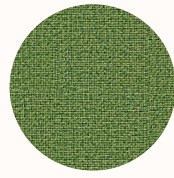
EJ175
Inverness



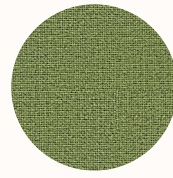
EJ180
Cluanie



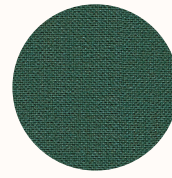
EJ184
Vit



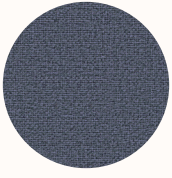
EJ185
Staffa



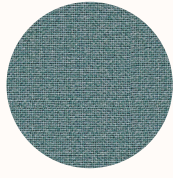
EJ186
Fair Isle



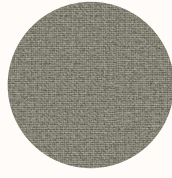
EJ187
Lora



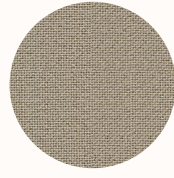
EJ188
Easdale



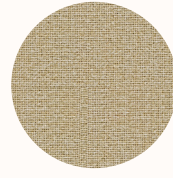
EJ189
Ronay



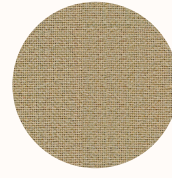
EJ190
Hillswick



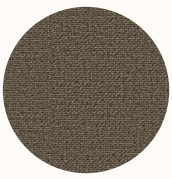
EJ191
Shetland



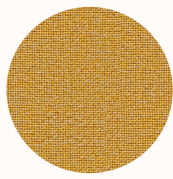
EJ192
Lomond



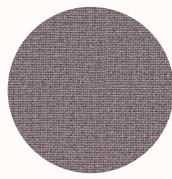
EJ193
Beltane



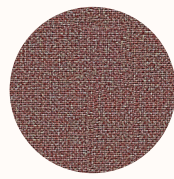
EJ194
Lerwick



EJ195
Maree



EJ196
Denny



EJ197
Lossie

Screen / Panel

Category A



Camira Carlow

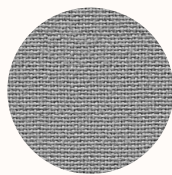
Carlow echoes the calm, gentle landscape of its Celtic namesake in rural Ireland. The fabric, like the county, invites you to escape into a place of tranquillity, discovering and exploring its hidden gems scattered throughout a vibrant textile tableau. This dobby weave panel fabric is brought to life in brave and intriguing colour mixes which can be teamed with our most popular upholstery fabrics as well as its panel partner Cara. Carlow is acoustically transparent, making it ideal as a decorative facing for sound absorbing boards.

Composition: 100% polyester

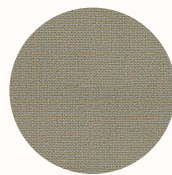
Width: Approx 170cm

Weight: 348 g/m

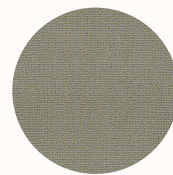
Durability: 65,000 Martindale



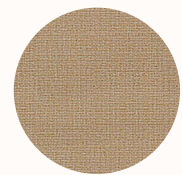
CLW01
Tallow



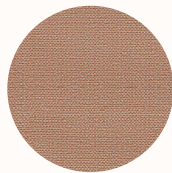
CLW02
Ballina



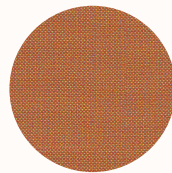
CLW03
Roundwood



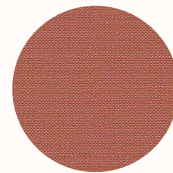
CLW04
Quin



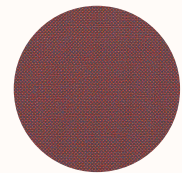
CLW05
Callan



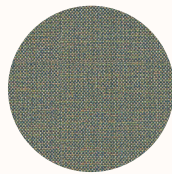
CLW06
Navan



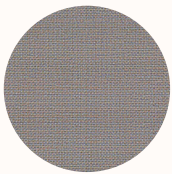
CLW07
Dublin



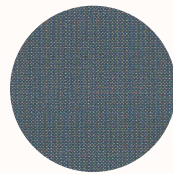
CLW08
Redcross



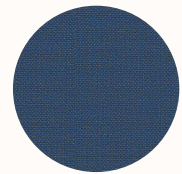
CLW09
Convoy



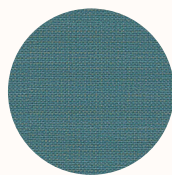
CLW10
Ardee



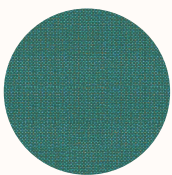
CLW11
Wicklow



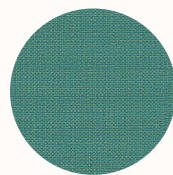
CLW12
Malin



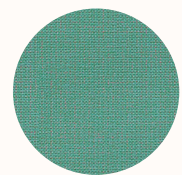
CLW13
Sligo



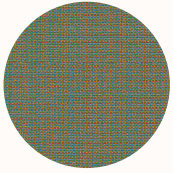
CLW14
Bree



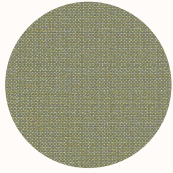
CLW15
Cavan



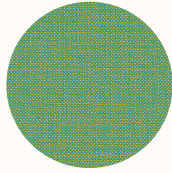
CLW16
Mayo



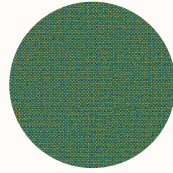
CLW17
Balloo



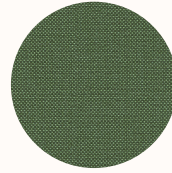
CLW18
Carrick



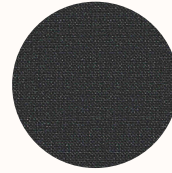
CLW19
Ardmore



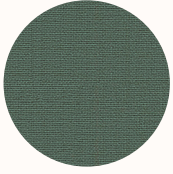
CLW20
Ennis



CLW21
Emily



CLW22
Avoca



CLW23
Parteen



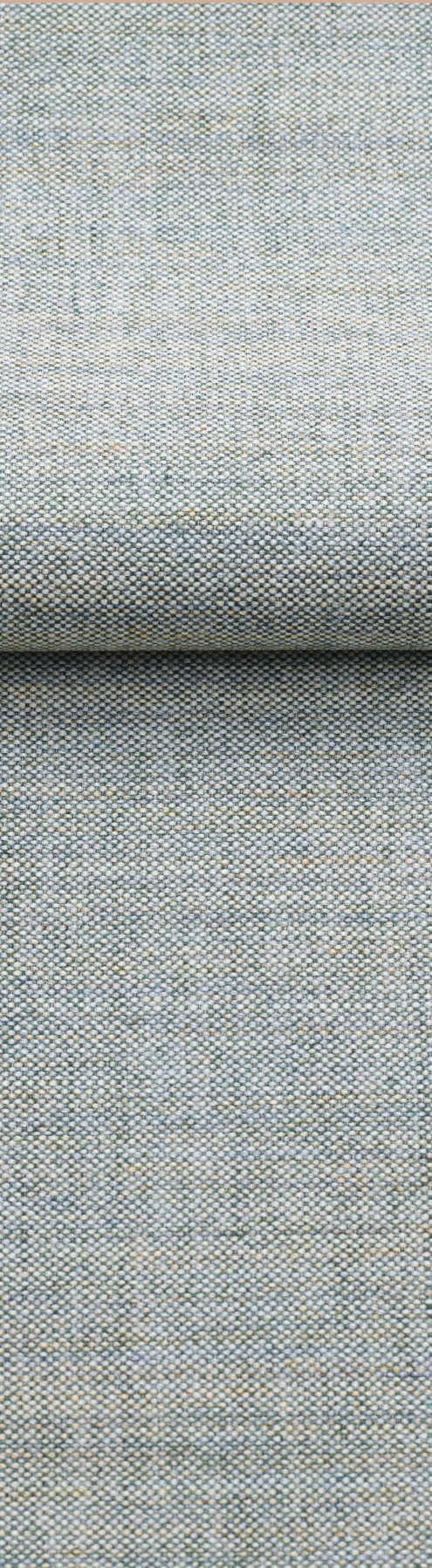
CLW24
Glenamoy



CLW25
Clifden

Screen / Panel

Category B



Kvadrat Remix Screen

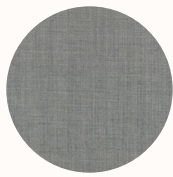
Remix Screen is a lighter version of the acclaimed textile Remix, which is specially developed for wall panels, deskscreens and similar applications. Like Remix, it is designed by Giulio Ridolfo. Remix Screen comes in 16 elegant colourways created matching the palette of Remix 3. Inspired by an extensive study of traditional Indigo dyeing undertaken by Giulio Ridolfo on his travels, these comprise subtle neutrals and natural notes, as well as bolder blue and orange hues. Suitable for contract use, Remix Screen is very durable and has a long life span. It is ideal for architects and designers who seek to configure interiors into different spaces with panels, screens and room-dividing furniture.

Composition: 90% new wool worsted 10% nylon

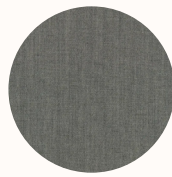
Width: Approx 170cm

Weight: 450 g/lin. m

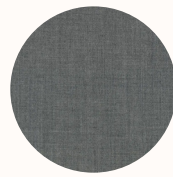
Light Fastness: 6-7



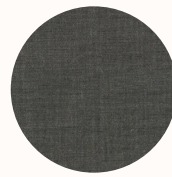
0128



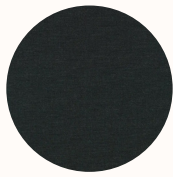
0138



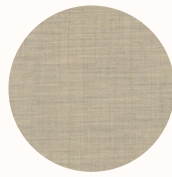
0148



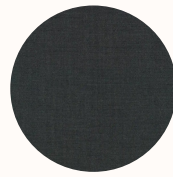
0158



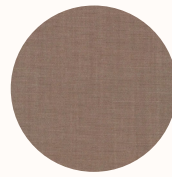
0188



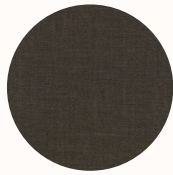
0228



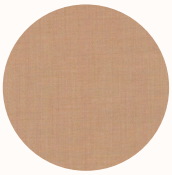
0288



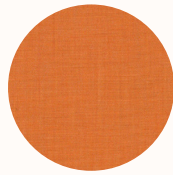
0328



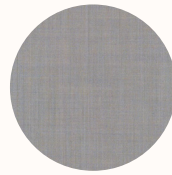
0358



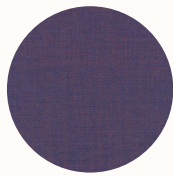
0408



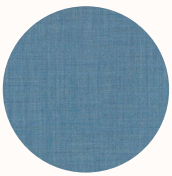
0528



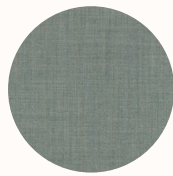
0608



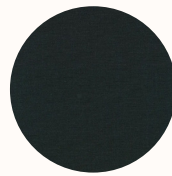
0688



0818



0908



0998

Screen / Panel

Category B

Camira Era

Era is a subtle, two tone polyester fabric containing stretch in both directions for use on panels, pods and soft seating. The baby herringbone weave offers an understated contemporary texture while its colouring technique provides close up intrigue. The palette incorporates playful brights and sophisticated muted tones.

Composition: 100% Polyester

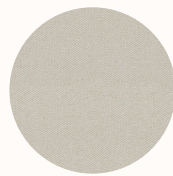
Width: Approx 170cm

Weight: 320 g/m² ±5%

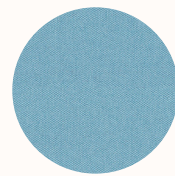
Light Fastness: 5 (ISO 105 - B02)



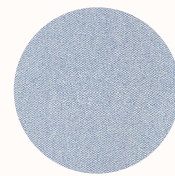
CSX30
Transition



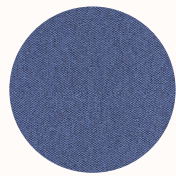
CSX01
Futurist



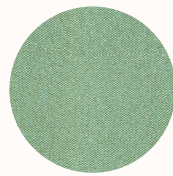
CSX20
Aeon



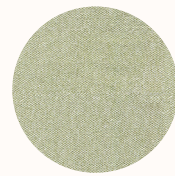
CSX38
Allowance



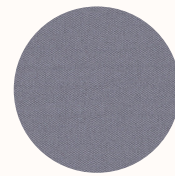
CSX42
Range



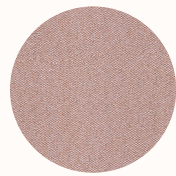
CSX36
Notation



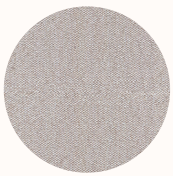
CSX33
Analogue



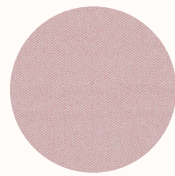
CSX11
Forecast



CSX23
Occurrence



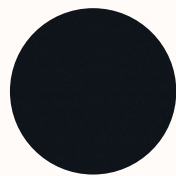
CSX41
Quota



CSX19
Calendar



CSX31
Splitsecond



CSX14
Forward

Verse Panel only

Category B

Camira Sonus

With a fibre felted finish and an appealing mélange effect, the Sonus range is the ideal accompaniment for a modern interior. An acoustically transparent fabric for use on panels, Sonus is the perfect enhancement for a range of vertical surfaces.

Composition: FHR: 72% Polyester, 18% Polyamide, 10% Viscose
FHU: 57% Polyester, 43% Polyamide

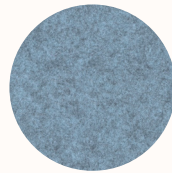
Width: Approx 170cm

Weight: 200 g/m2 ±10%

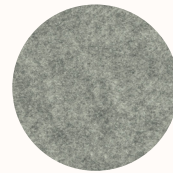
Light Fastness: Standard: 5 (ISO 105 - B02), FHR05: 4 (ISO 105 - B02)



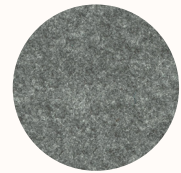
FHR02
Voice



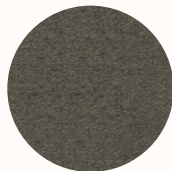
FHR06
Audio



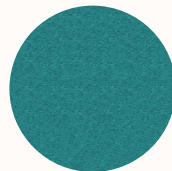
FHR03
Beat



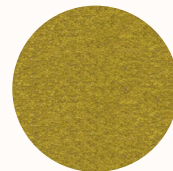
FHU04
Music



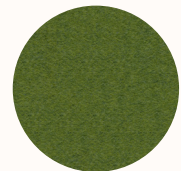
FHR07
Melody



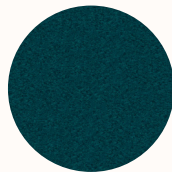
FHU11
Rap



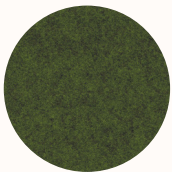
FHR01
Song



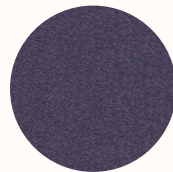
FHR12
Acoustic



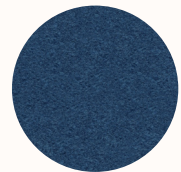
FHU15
Lyric



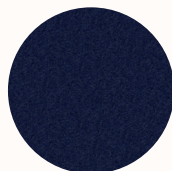
FHU08
Vocal



FHR13
Soul



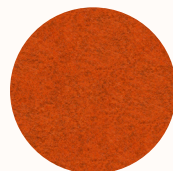
FHU14
Classical



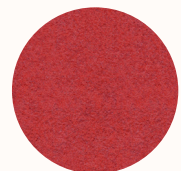
FHR16
Verse



FHR05
Amp



FHR09
Pop



FHR17
Chorus



FHU10
Chime